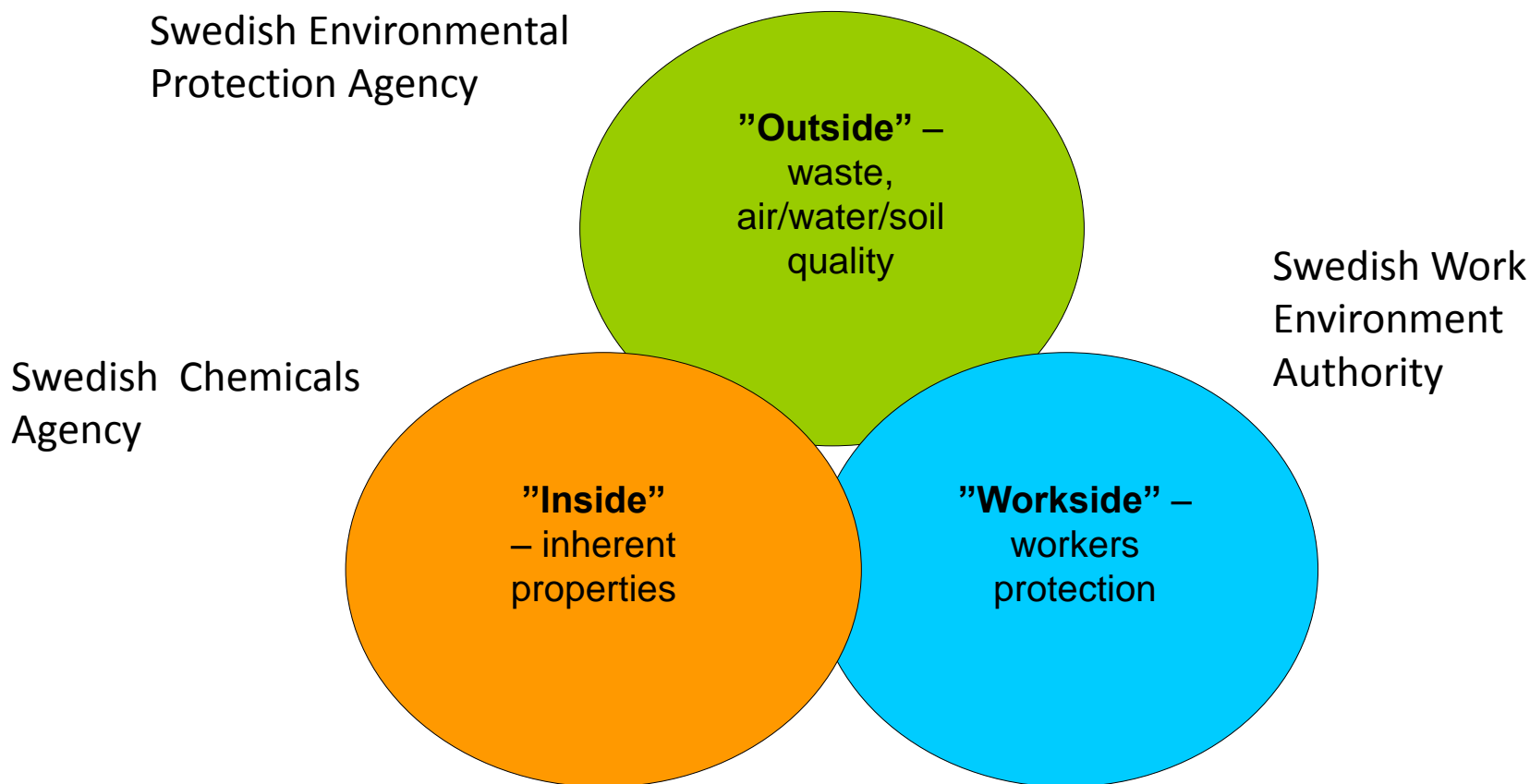
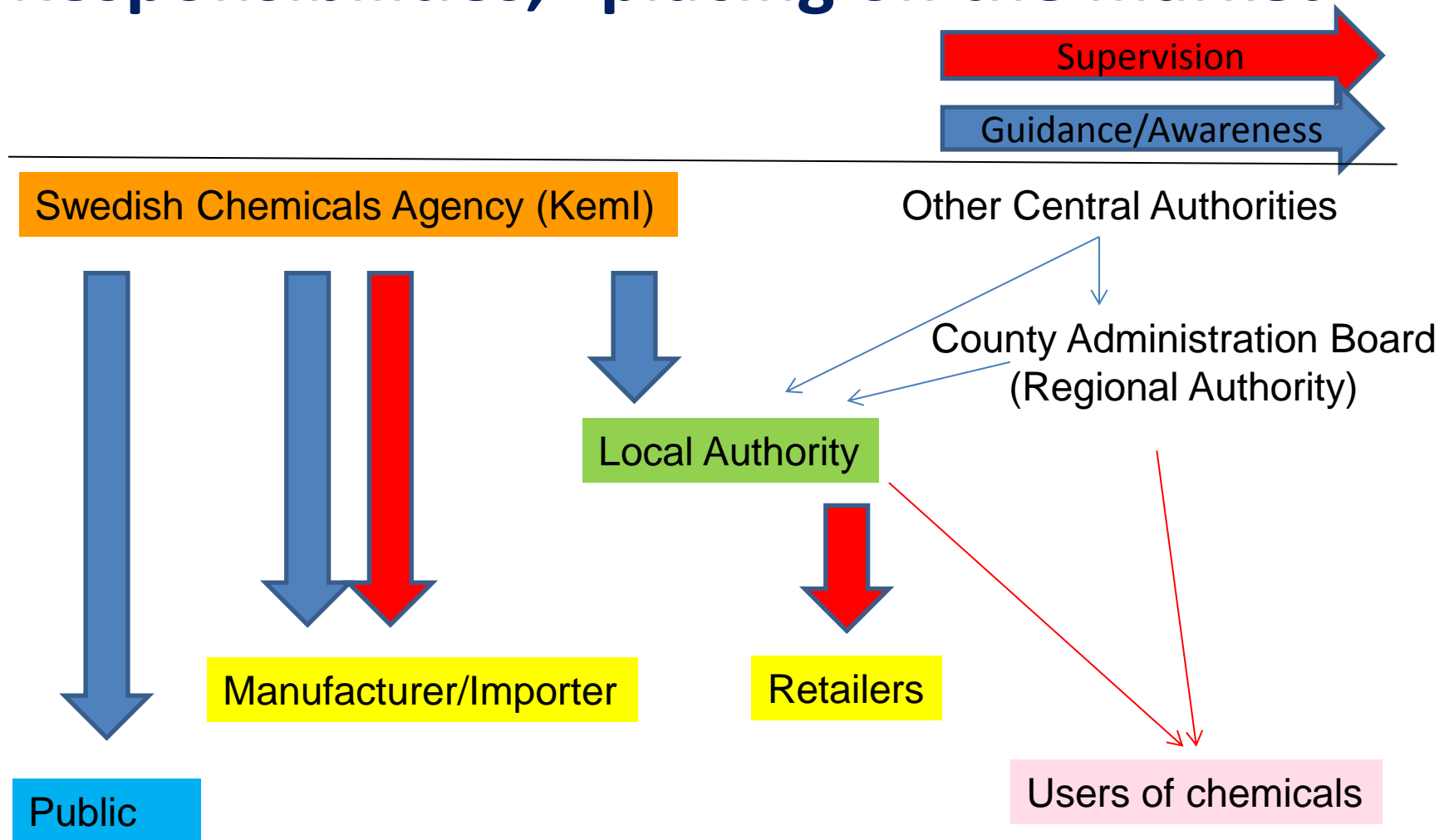


***Organisation and responsibilities
for chemicals control
in Sweden***

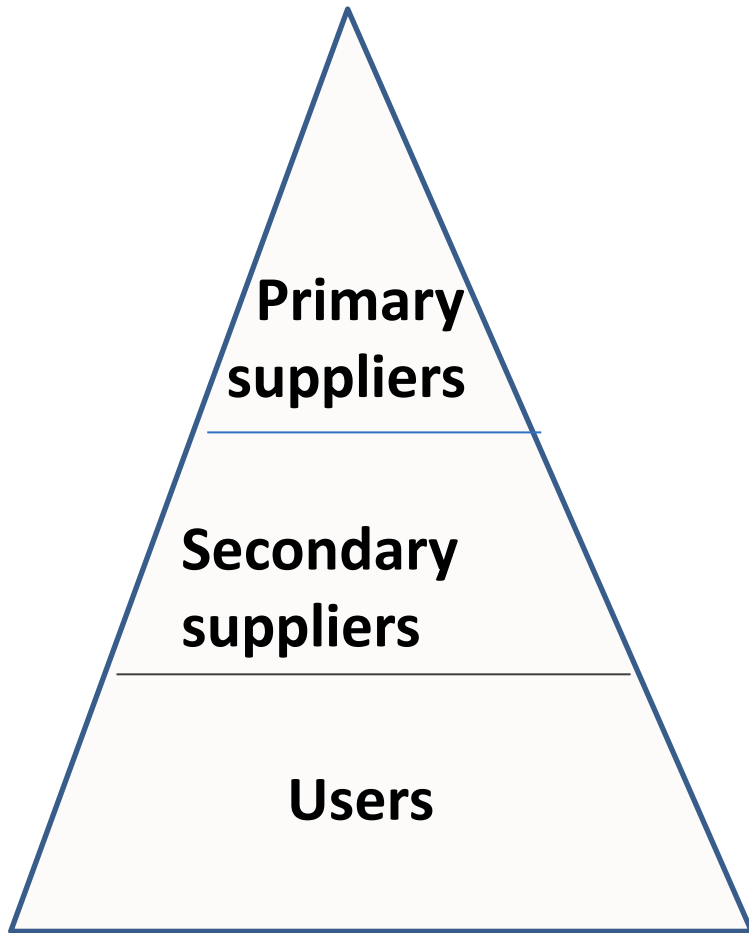
Swedish approach for Chemicals Control



Responsibilities, “placing on the market”

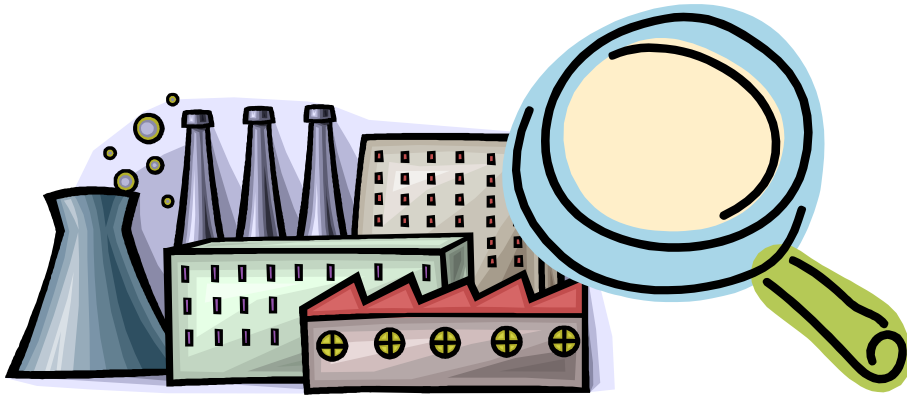


Control of manufacturer/importer or user?



- Relatively few manufacturers/importers compared to retailers/users
- Manufacturer and importers have better knowledge of a chemical's properties
- Product information should be written by M/I and be given to retailers/users

Inspections



**The companies have the
responsibility**

- KemI/Enforcement dep
 - Monitor companies' compliance with legislation and regulations (manufacturers/importers)
 - Inspections all over Sweden

Degree of control

High

Low



Pesticides

- Approval
- Registration
- Labelling/SDS
- Enforcement



Chemical products

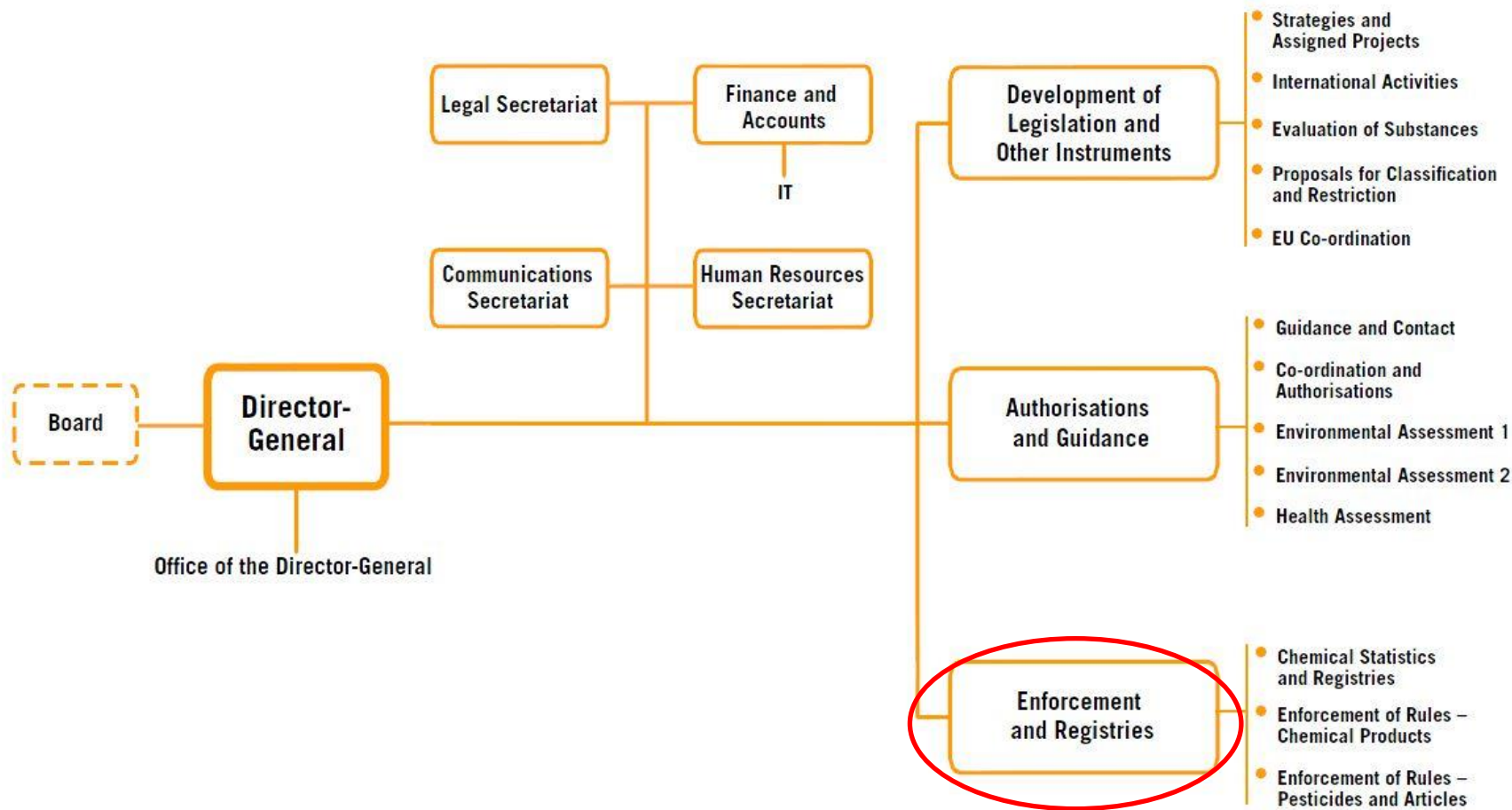
- Registration
- Labelling/SDS
- Enforcement



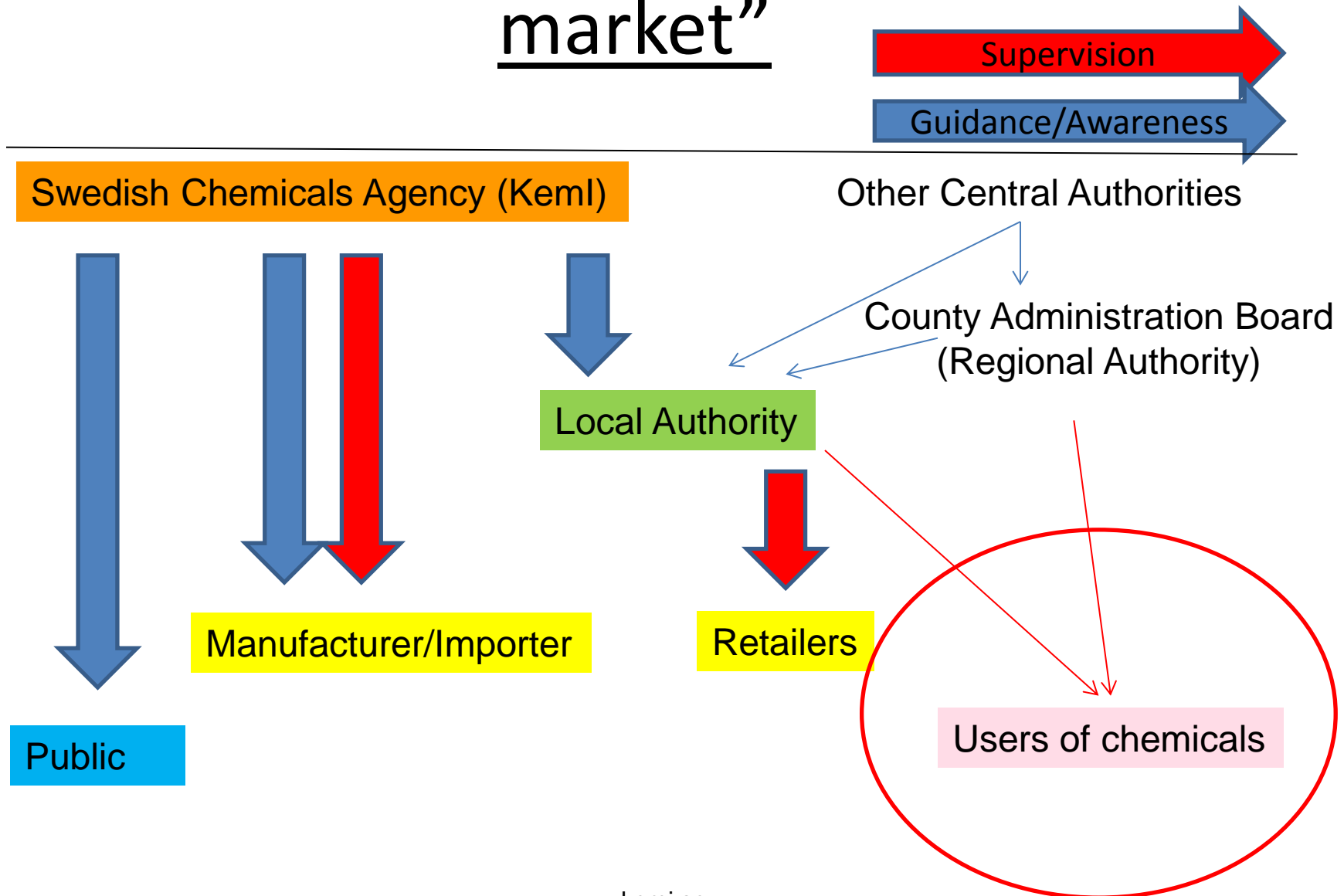
Articles

- Reach Article 33
- Product directives
- Enforcement

Organisation



Responsibilities, “placing on the market”



Environmentally hazardous activities

- **Category A activities**

Refineries, paper and pulp industries, petrochemical operations, automotive manufacturers, waste incineration, the chemical industry, combined heat and power plants, etc.

- **Category B activities**

Sewage treatment plants, textile industry, manufacturing industry, small waste management plants, sawmills, agriculture, food industry, etc.

- **Category C activities**

Petrol stations, small sewage treatment plants, agricultural small holdings, waste sorting facilities, manufacturing industry, etc.

Permits

- Environmental courts for Category A cases
- Environmental appraisal delegations (County Administrative Board) for Category B cases

What is regulated by environmental permits?

- The scope of the business
- Emission limit values to air, ground and water
- Management of chemicals
- Waste management and recycling
- Energy efficiency measures
- Traffic to and from the site (noise)
- Measures to prevent accidents
-

Category C activities

- Have to be reported before started (6 weeks)
- Application form
- County Administration Board and Sewage treatment plant always consulted, perhaps others as well

Example – manufacturing of paper

- A e 21.30
manufacturing of more than 7 000 ton of paper annually
- B e 21.40
manufacturing of 100-7 000 ton of paper annually
- C e 21.50
manufacturing of 10-100 ton of paper annually

